

NODE

This battery-powered, waterproof controller offers automatic irrigation control for temporary irrigation and sites without electricity.

Key Benefits

Number of stations:

- 1, 2, 4, or 6
- Battery-operated controller for automatic irrigation without AC power
- Battery-life indicator for battery replacement
- Waterproof enclosure seal protects against water ingress
- 3 flexible programs with 4 start times each and up to 6-hour run times
- Suspend irrigation up to 99 days during the off-season
- Easy Retrieve™ memory backs up the full irrigation schedule if ever changed
- Seasonal adjustment for quicker schedule adjustments without changing run times
- Solar panel provides maintenance-free operation
- Mounts to Hunter solenoids, pipes, flat surfaces, or inside the valve box

Operating Specifications

- One or two 9V alkaline batteries or 1800 mAh solar panel with charging cell
- Operates Hunter DC-latching solenoids (P/N 458200)
- 100' maximum wire runs, 18 AWG wire only
- Station output: 9-11 VDC
- P/MV output: 9-11 VDC (multi-station models)
- Sensor inputs: 2 (wired soil plus wired rain, freeze, or wind only)
- Approvals: IP68 (submersible), UL, cUL, FCC, CE, RCM, ISED
- Warranty period: 2 years



Number of Stations: 1, 2, 4, 6
Type: Battery Operated, Fixed



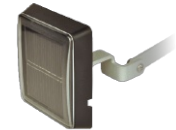
NODE-100
Diameter: 3½"
Height: 2½"



NODE-100-LS, NODE-200, NODE-400, NODE-600



NODE-100-VALVE



SPNODE (Optional Solar Panel Kit)
Height: 3¼"
Width: 3"
Depth: 5/8"

Model	Description
NODE-100-LS	Single station controller (DC latching solenoid ordered separately)
NODE-100	Single station controller (DC latching solenoid included)
NODE-200	2-Station controller (DC latching solenoid ordered separately)
NODE-400	4-Station controller (DC latching solenoid ordered separately)
NODE-600	6-Station controller (DC latching solenoid ordered separately)
NODE-100-VALVE	Single station controller with PGV-101G valve and DC latching solenoid (NPT threads)

User-Installed Options

Model	Description
458200	DC latching solenoid
SPNODE	Solar Panel kit for Node

Compatible Sensors

RAIN-CLIK	Wired Rain-Clik sensor
RFC	Wired Rain Freeze Clik
MINI-CLIK	Rain Sensor with wall mount
FREEZE-CLIK	Freeze sensor interrupts irrigation when temperatures drop below 37° F
WIND-CLIK	Wind sensor interrupts or returns irrigation when programmed wind speed is measured.

* Specify separately

